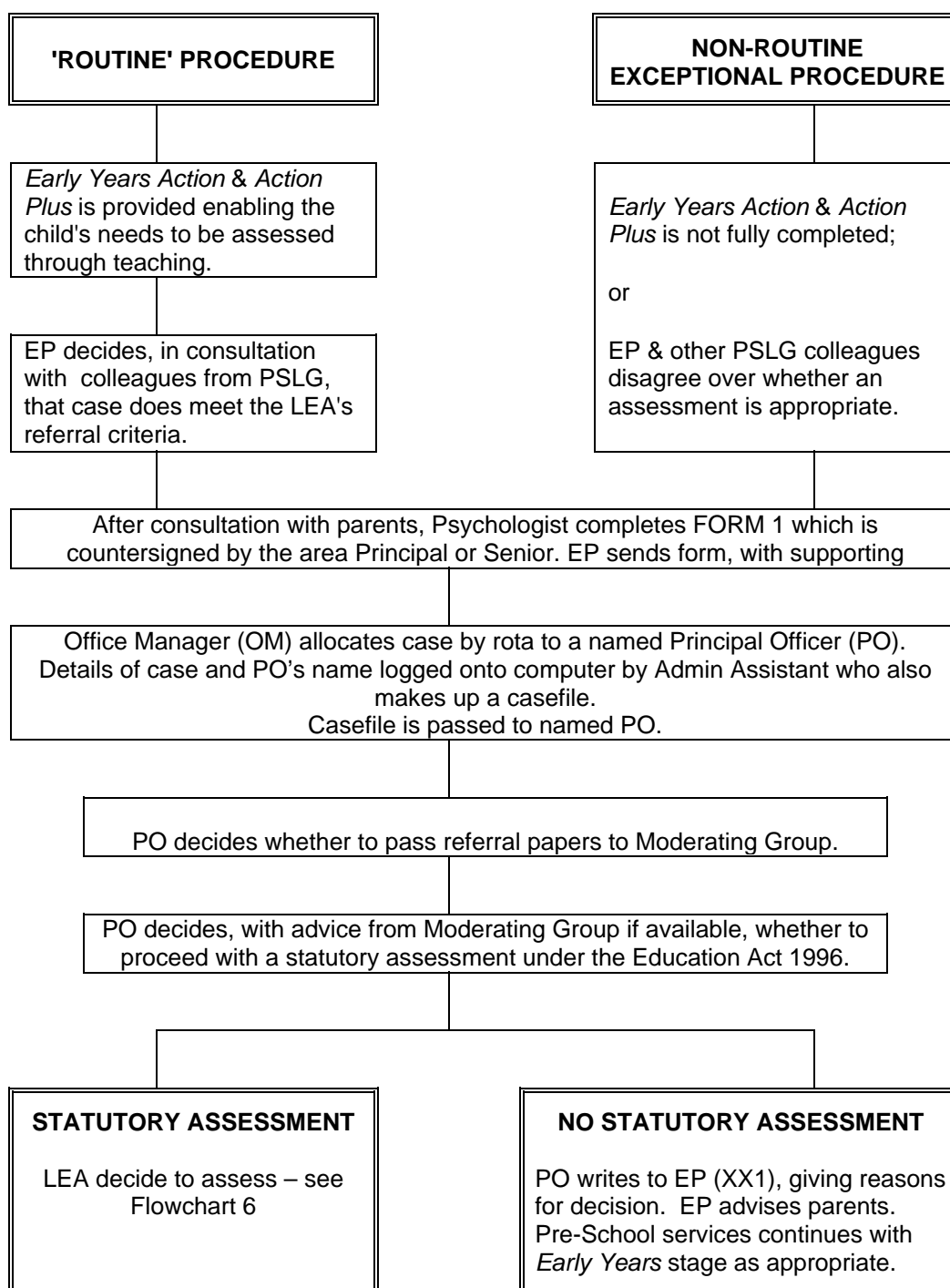
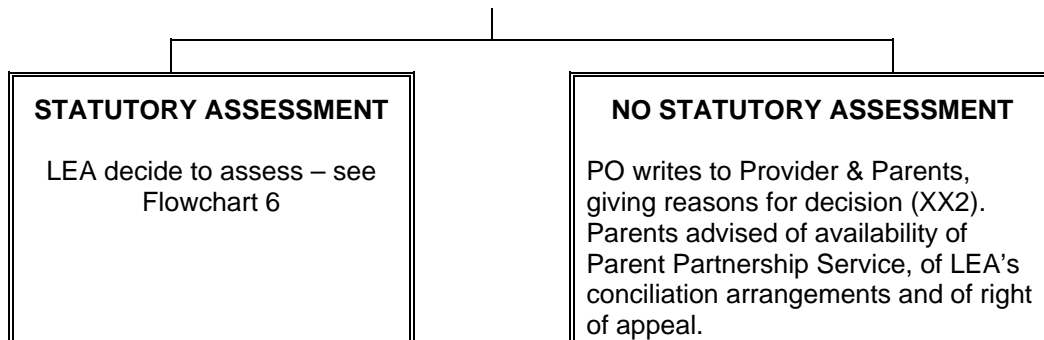


## 1. REQUEST FOR STATUTORY ASSESSMENT Early Years Referral by Educational Psychologist





**2: REQUEST FOR STATUTORY ASSESSMENT**  
**Referral by Early Education Provider**  
Continued from previous page

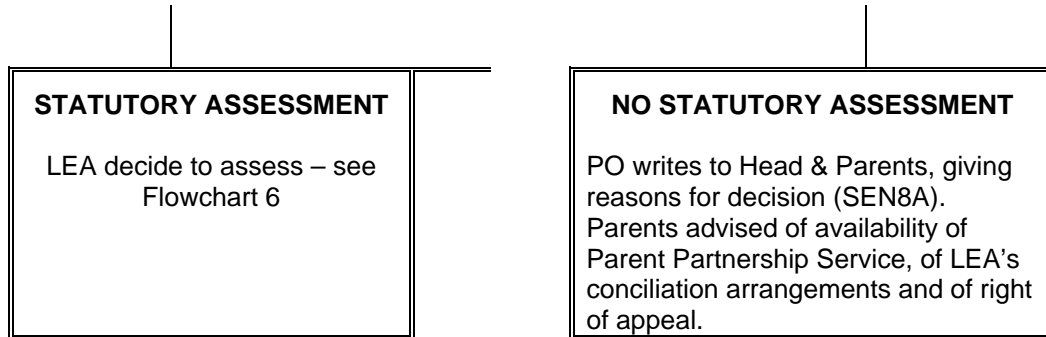




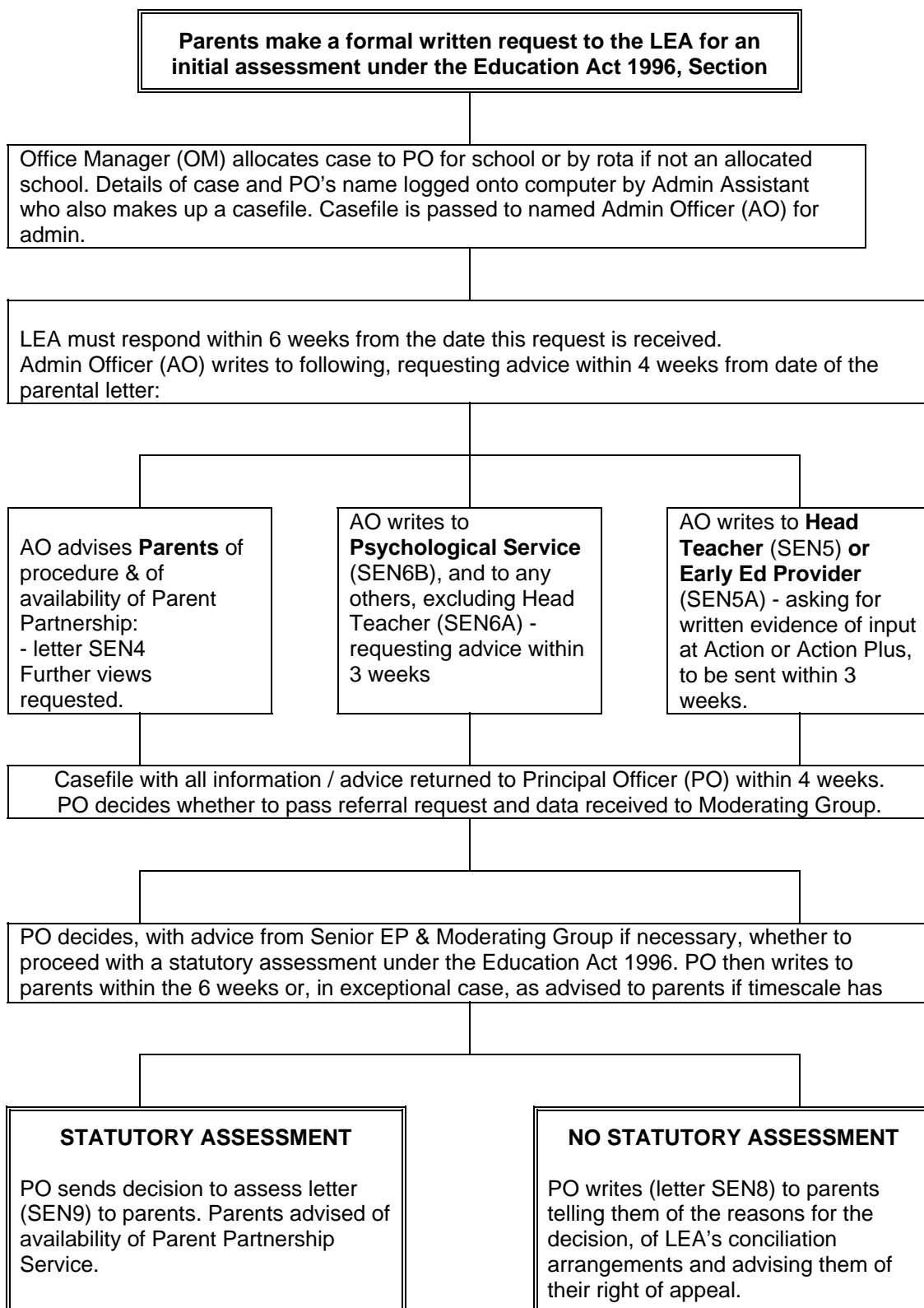
### 3. REQUEST FOR STATUTORY ASSESSMENT

#### Referral by Headteacher

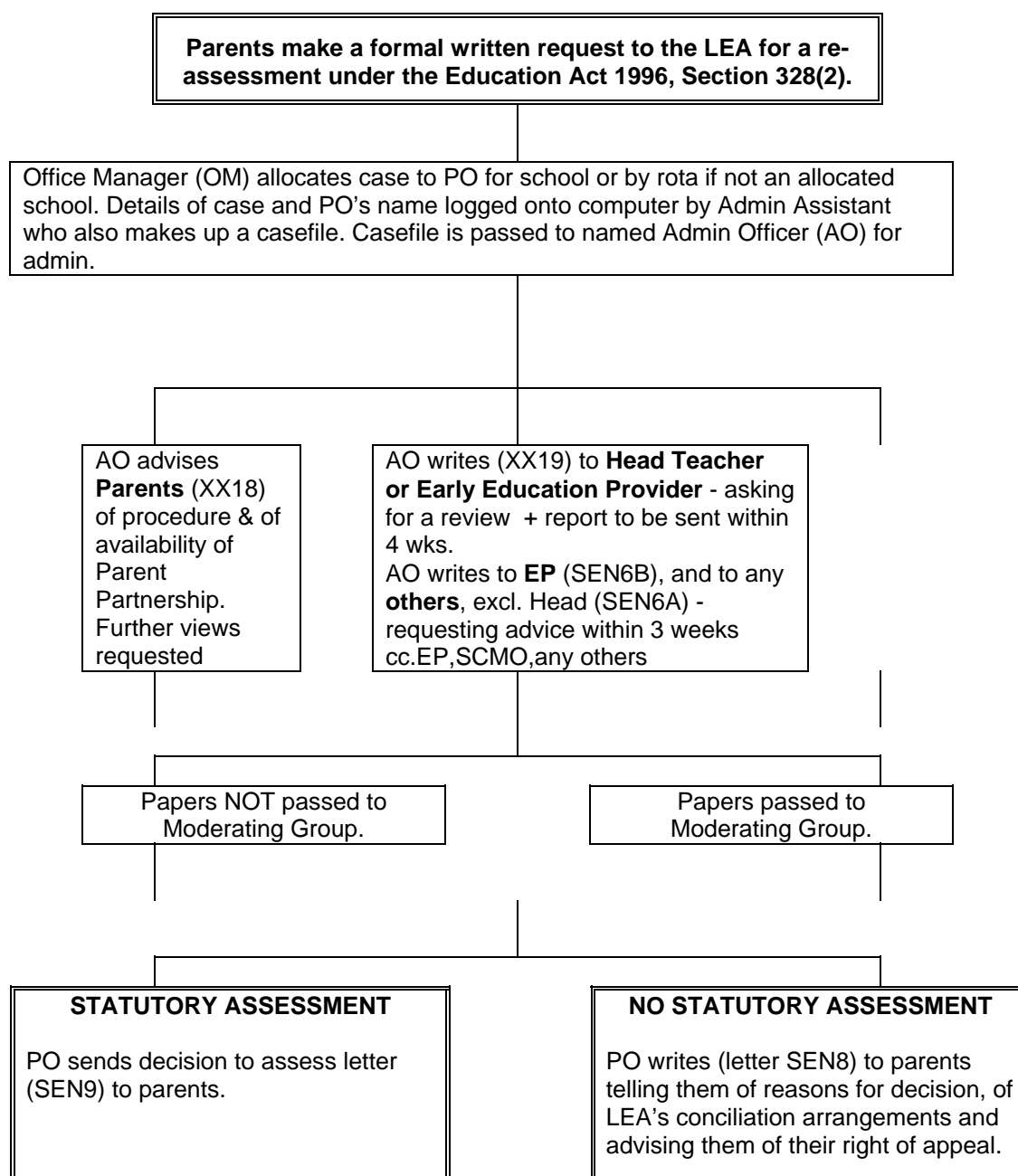
Continued from previous page



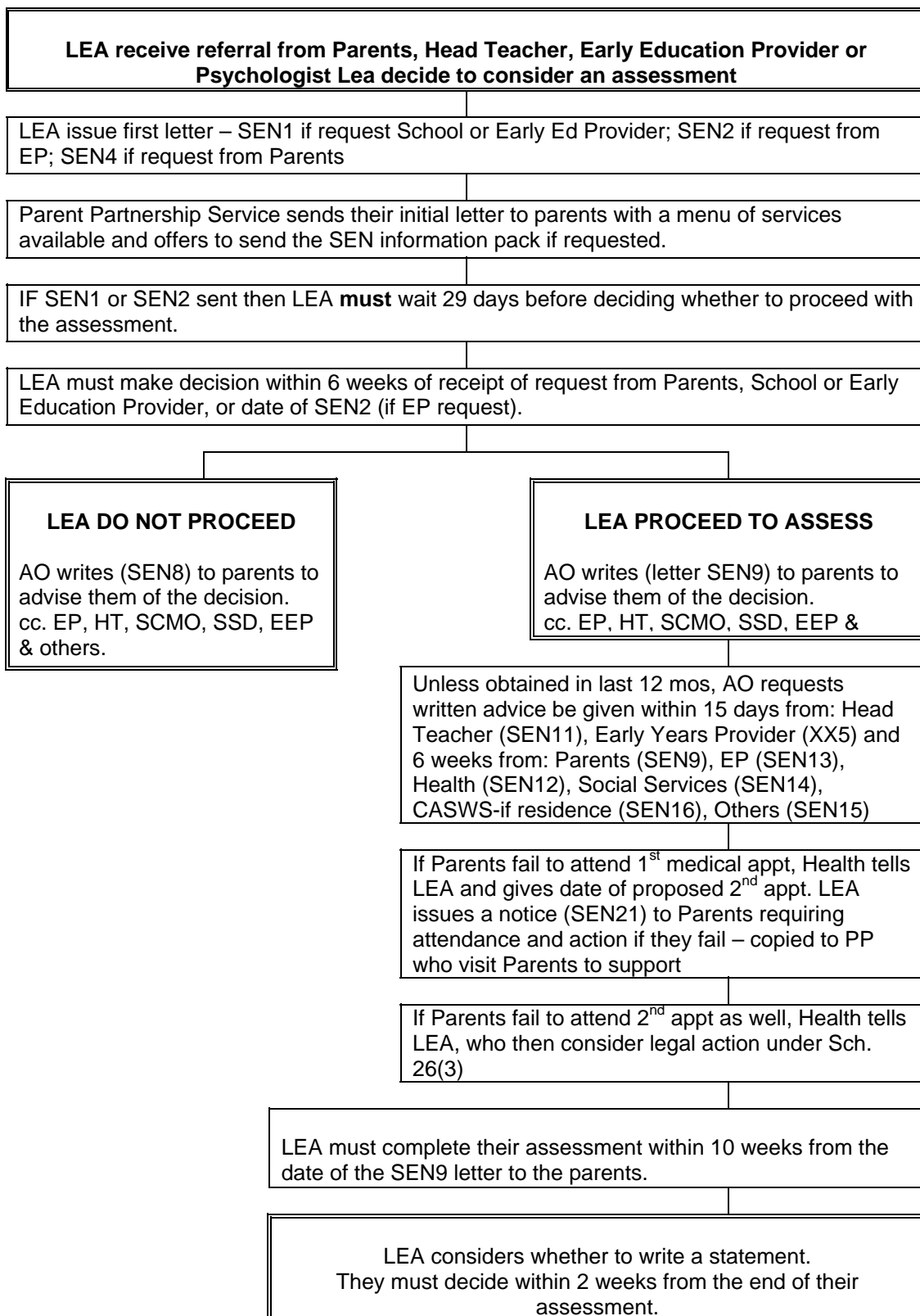
## 4. REQUEST FOR STATUTORY ASSESSMENT Referral by Parents



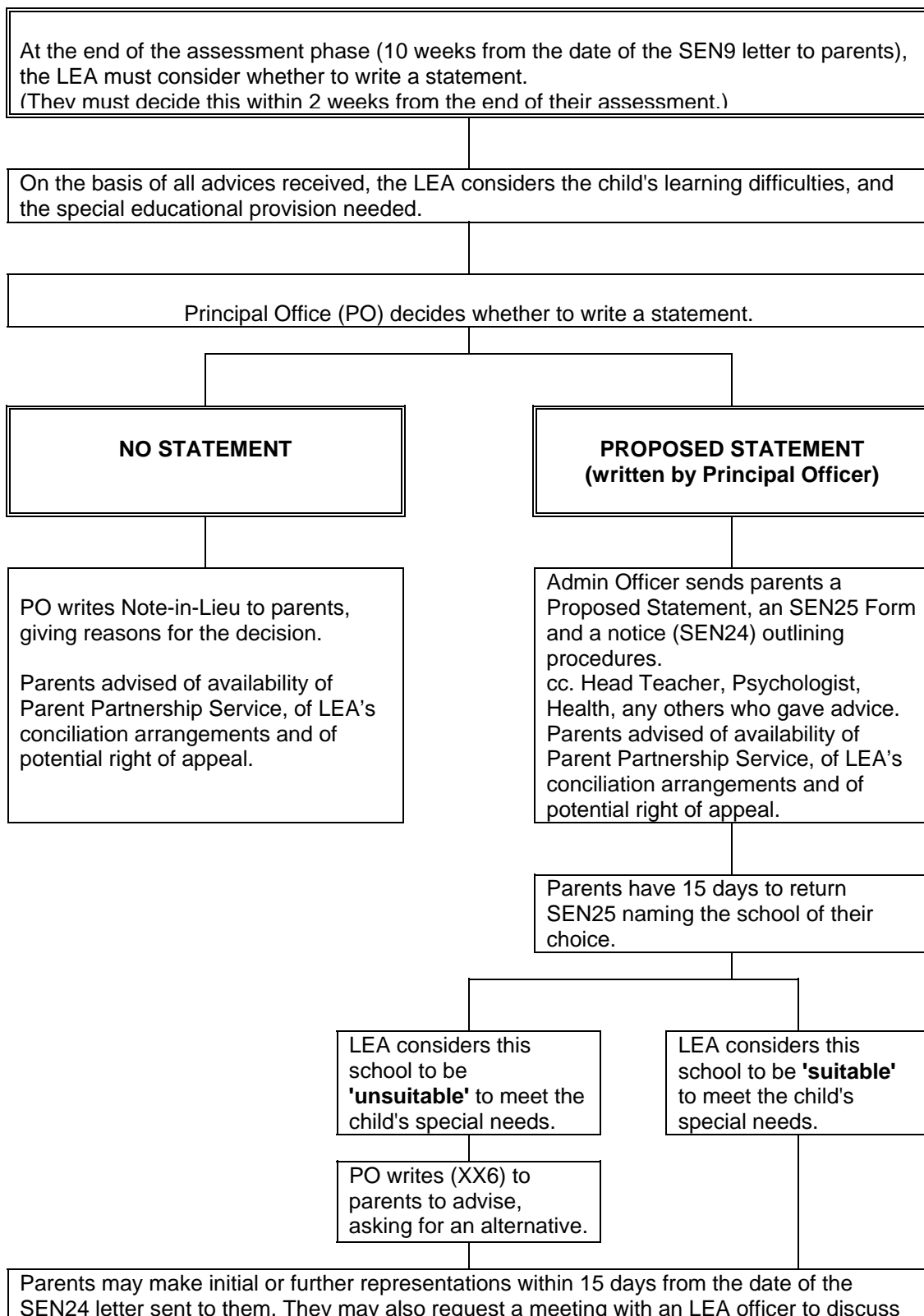
## 5. REQUEST FOR STATUTORY RE-ASSESSMENT Referral by Parents



## 6. STATUTORY ASSESSMENT PROCEDURE



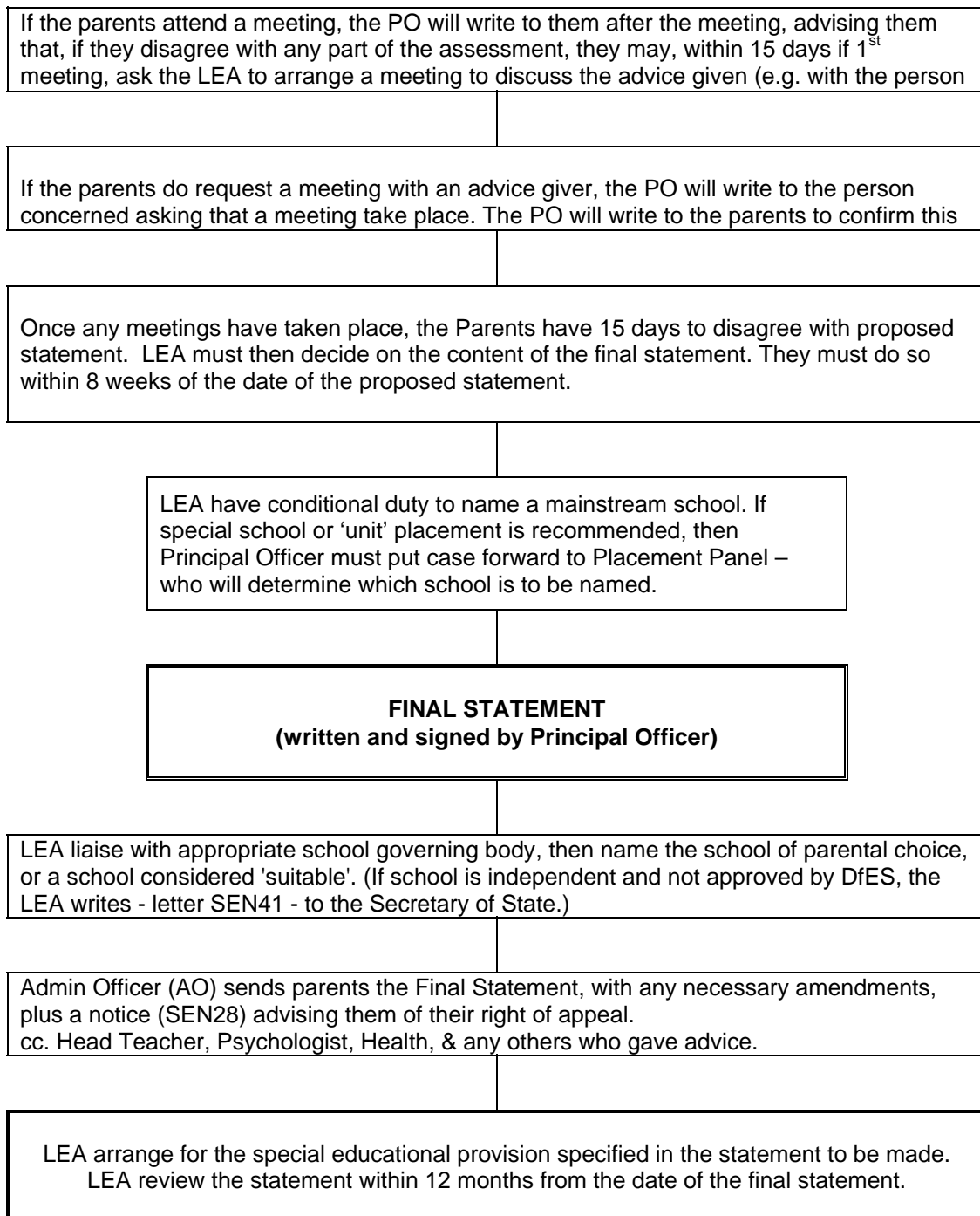
## 7. STATEMENTING PROCEDURE



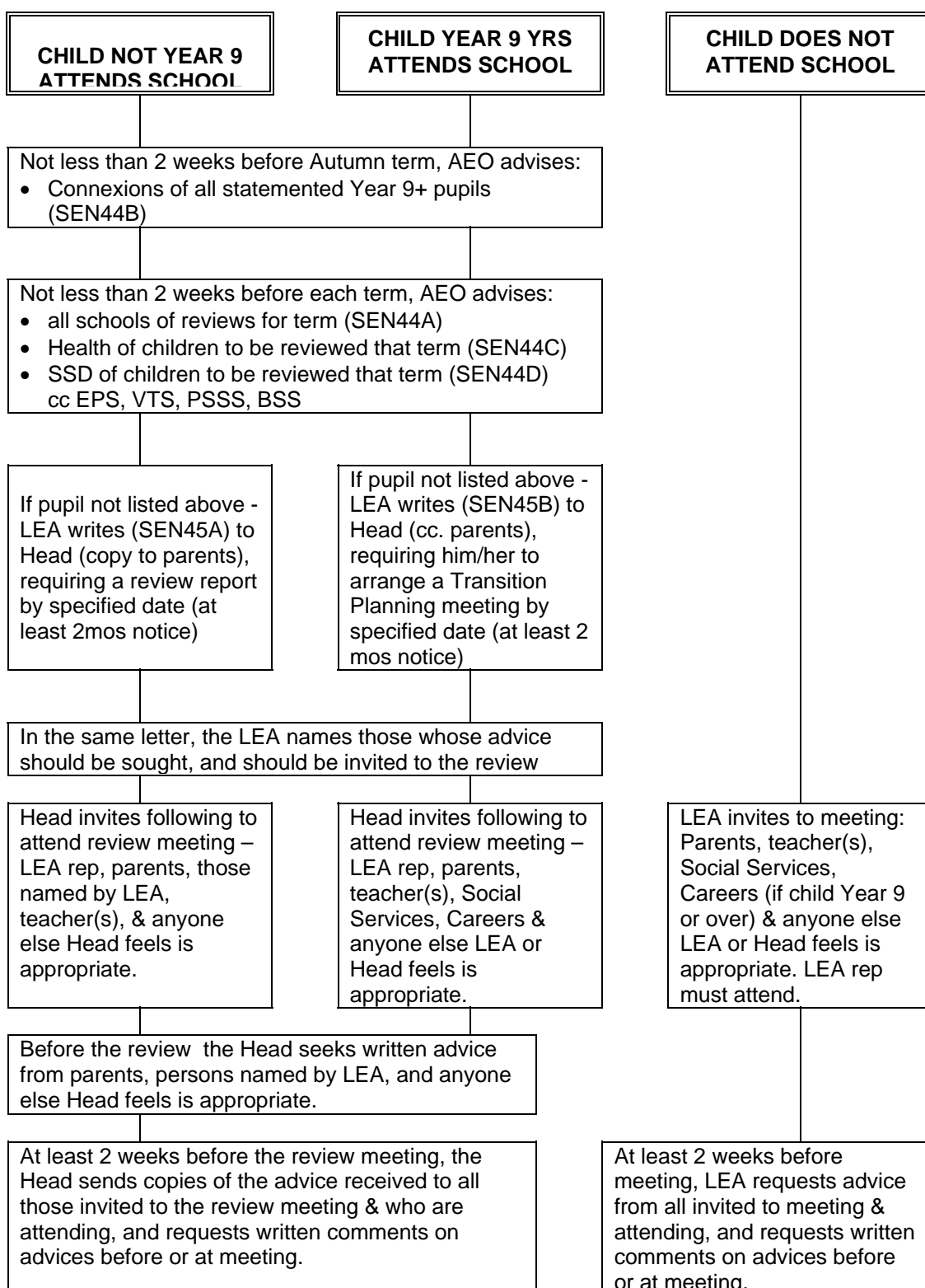
Flowchart 7: continued on next page

## 7. STATEMENTING PROCEDURE

Continued from previous page



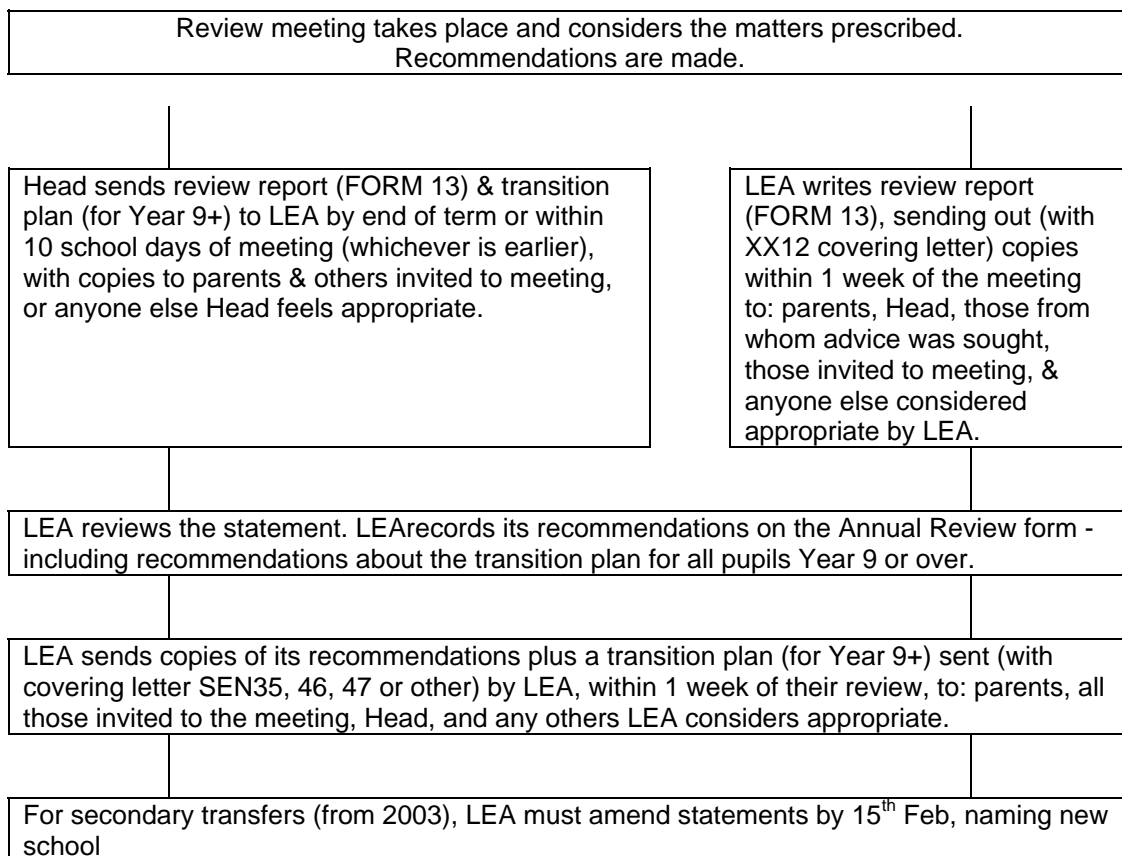
## 8. ANNUAL REVIEW PROCEDURE For a Child with a Statement



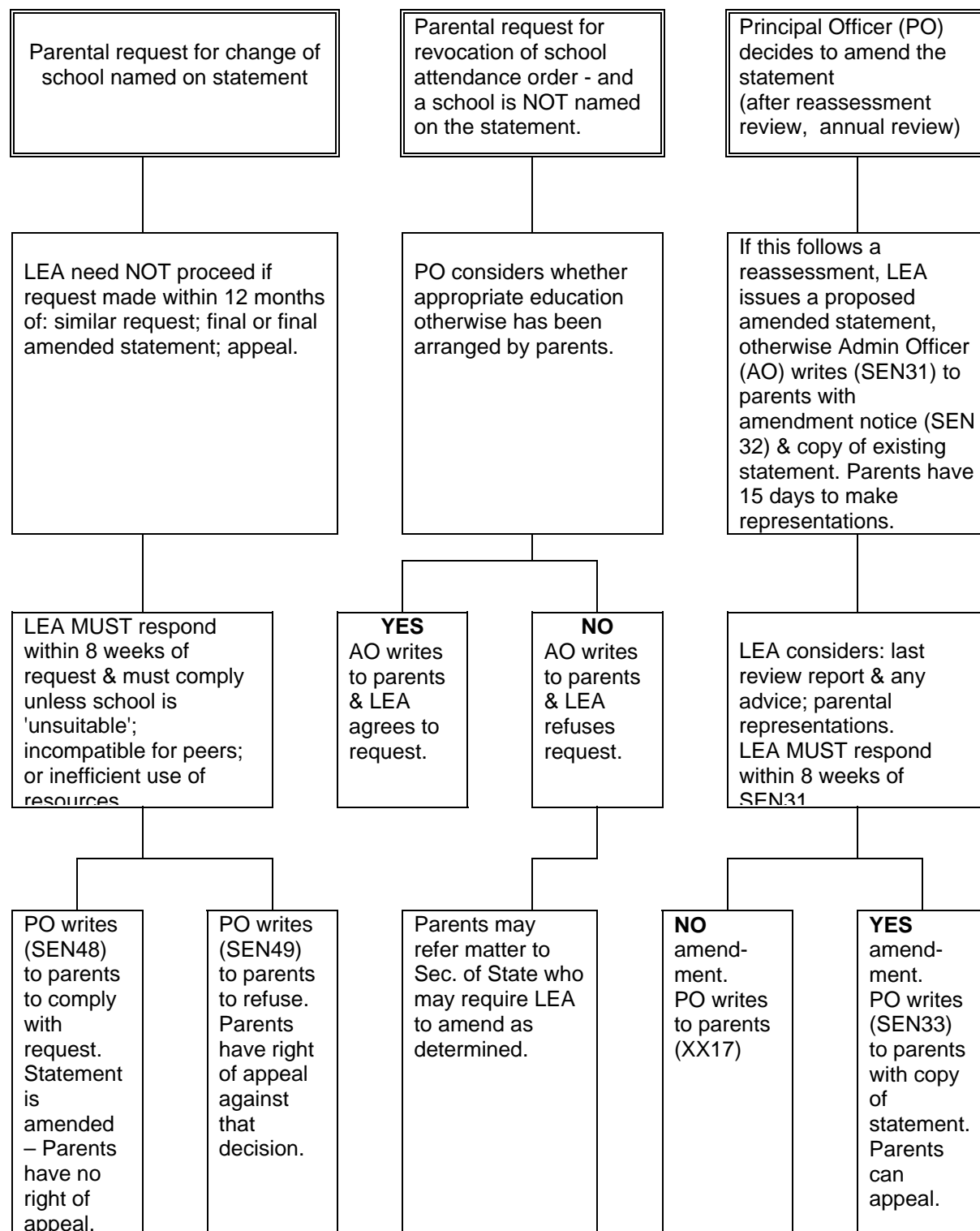
Flowchart 8: continued on next page

## 8. ANNUAL REVIEW PROCEDURE For a Child with a Statement

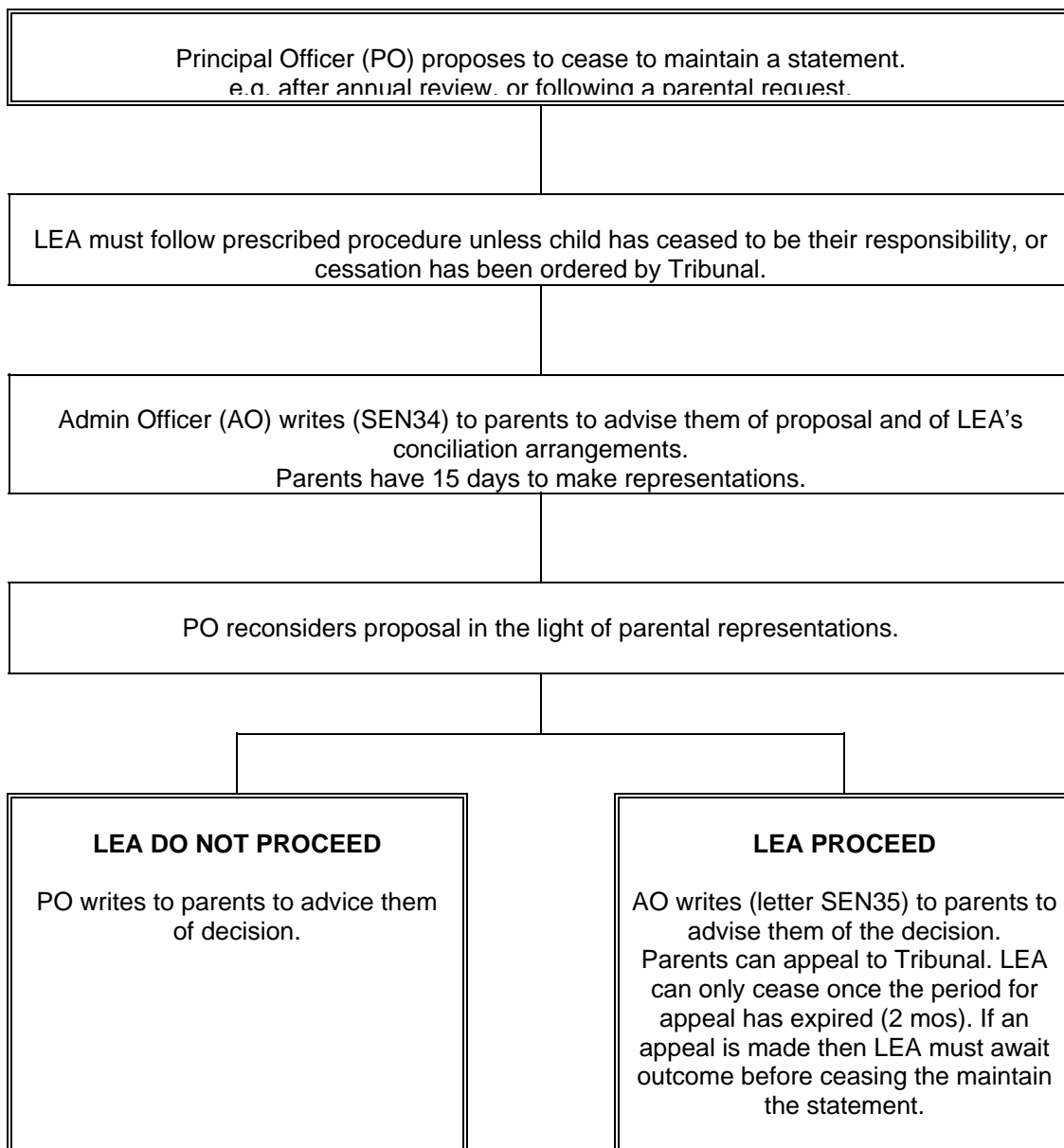
Continued from previous page



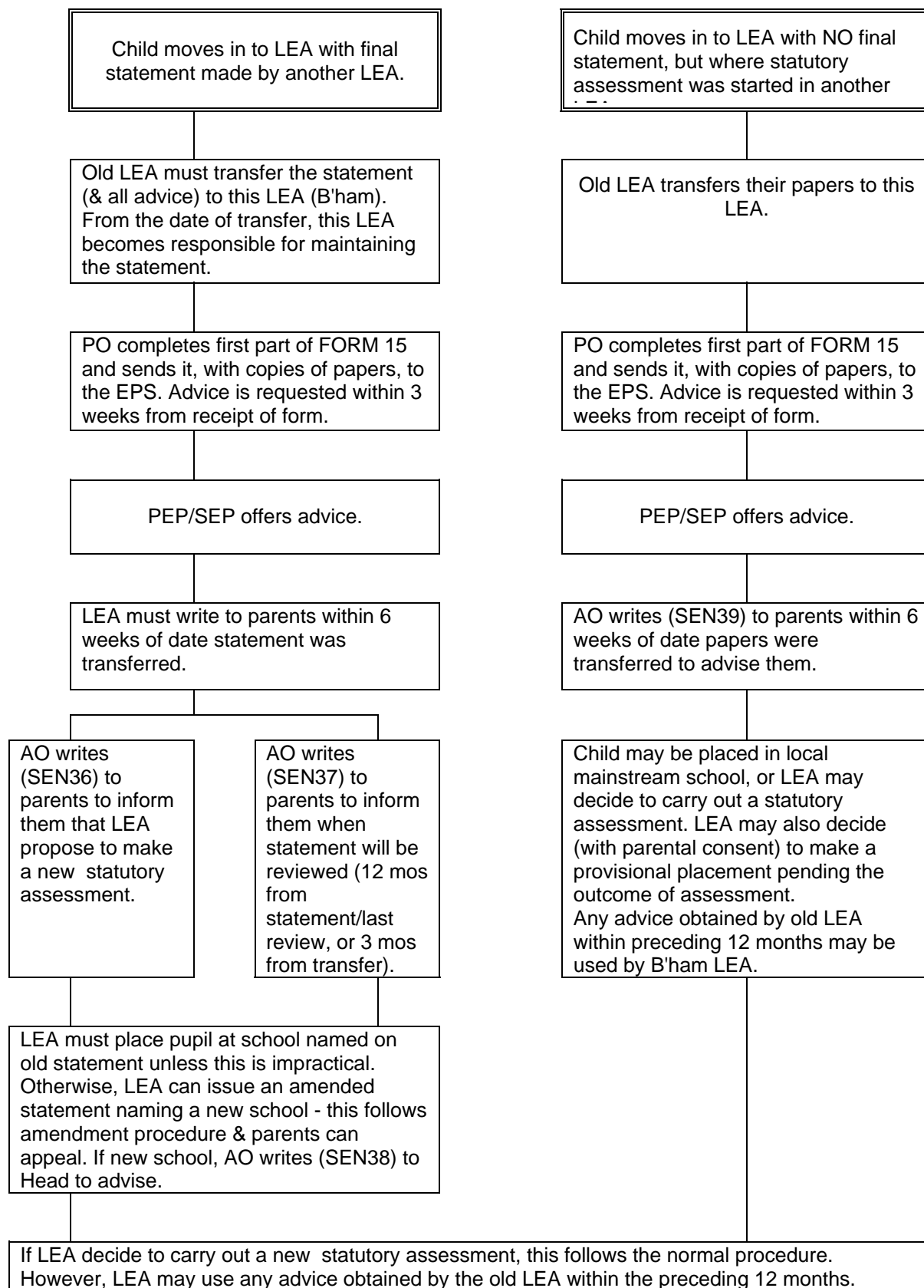
## 9. AMENDMENT OF A STATEMENT



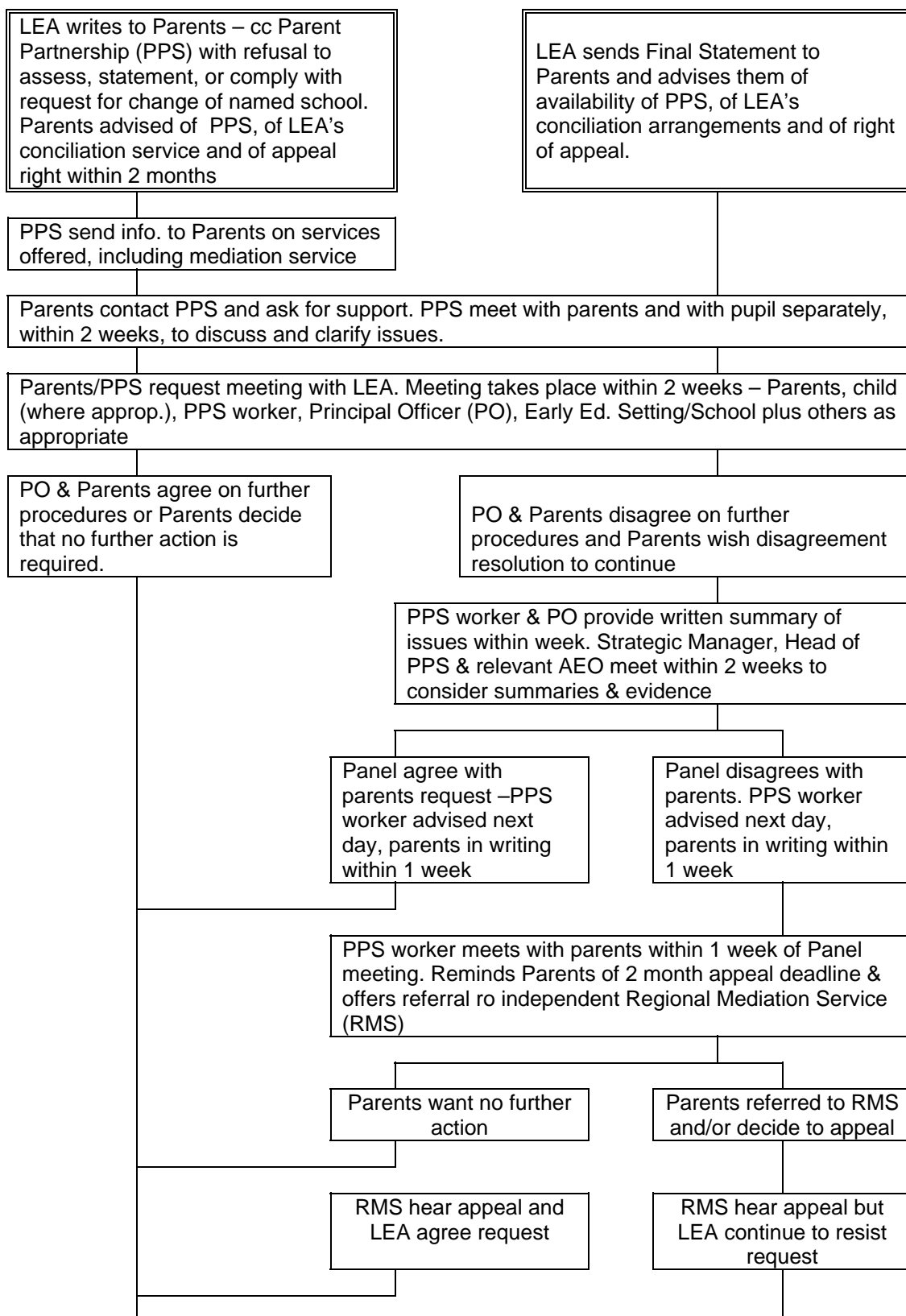
## 10. CESSATION OF STATEMENT



## 11. CHILD MOVING IN TO LEA



## 12. DISAGREEMENT RESOLUTION PROCEDURES



Flowchart 12: continued on next page

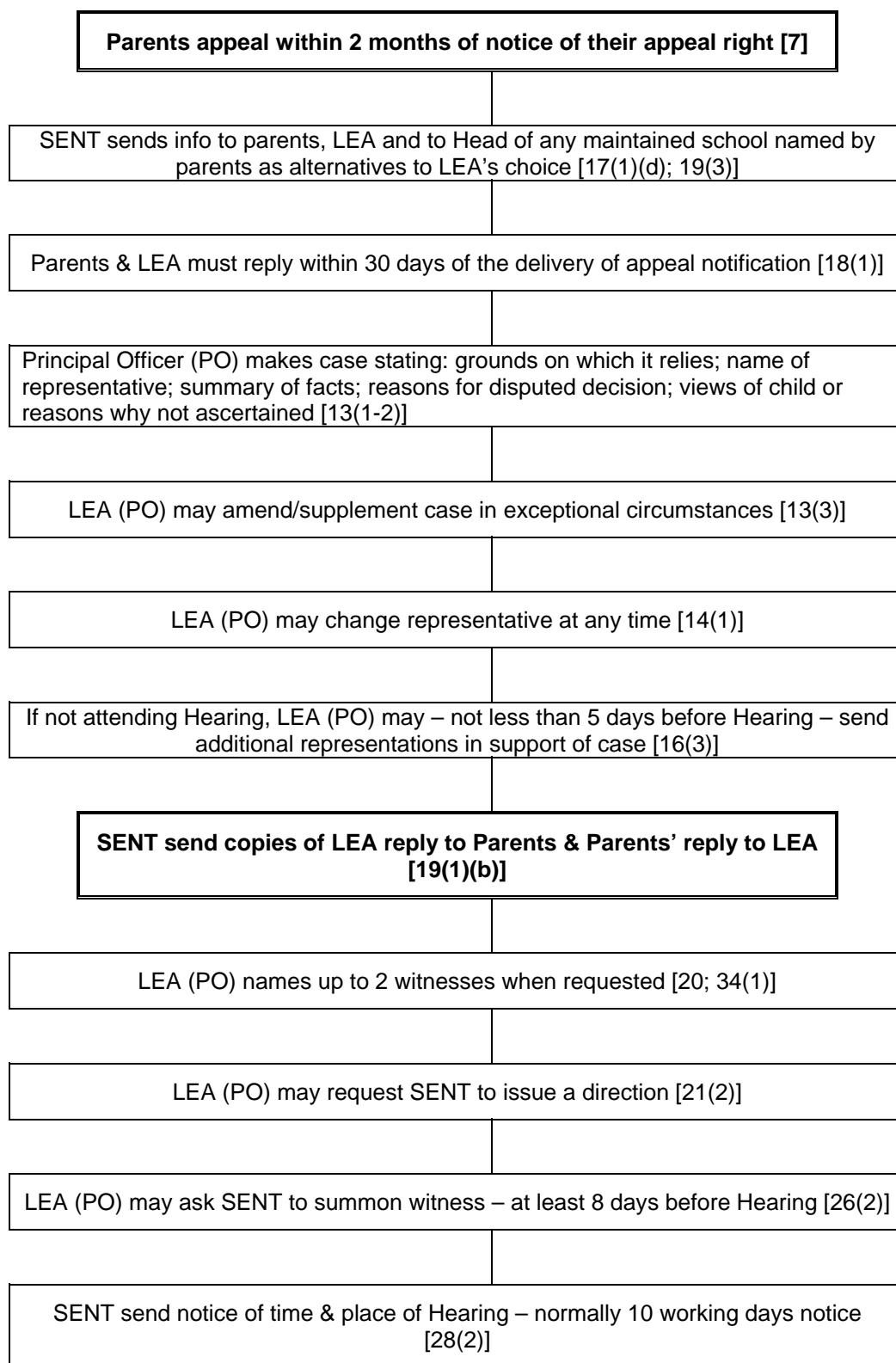
## 12. DISAGREEMENT RESOLUTION PROCEDURES

Continued from previous page

PARENTS & LEA AGREE  
OUTCOME

PARENTS ATTEND SENT

### 13. SEN & DISABILITY TRIBUNAL PROCEDURES (Numbers in brackets refer to the SEN Tribunal Regulations 2001)



Flowchart 13: continued on next page

### 13. SEN TRIBUNAL PROCEDURES

continued from previous page

